

WELCOME

1

# R.M. OF EAST ST. PAUL PUBLIC INFORMATION SESSION

PTH 59N & PTH 101 Interchange Project,  
Active Transportation (AT) Crossing of PTH 101 &  
Associated Highway & Road Improvements

PLEASE SIGN IN & TAKE A COMMENT SHEET TO SUBMIT PRIOR TO LEAVING

THURSDAY, MAY 21, 2015

4:00 P.M. - 7:00 P.M.

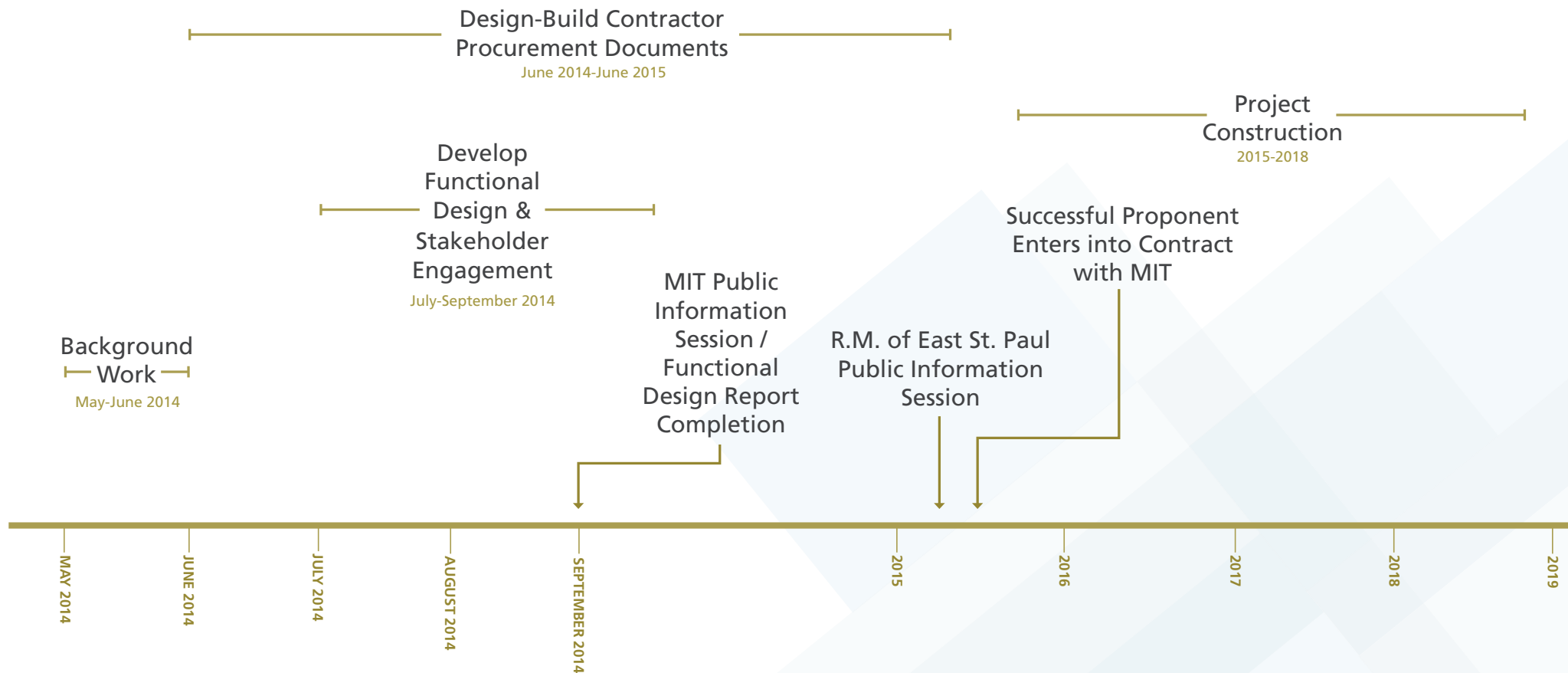


- » Improve safety and traffic flow at the intersection of PTH 59N and PTH 101 and adjacent areas.
- » Provide an AT crossing of PTH 101 and connect the Northeast Pioneers Greenway multi-purpose path in Winnipeg with AT infrastructure in the Rural Municipality of East St. Paul.

- » MMM Group Limited is assisting Manitoba Infrastructure & Transportation (MIT) with the procurement process and construction overview contract to complete the project.
- » This project will be delivered as a “design-build” contract rather than the more common “design, bid, build” construction contract.
- » A design-build contract engages a single consortium to complete final design plans based on the functional design and then construct the project. As a result, some minor adjustments to the design shown here may still occur.
- » MIT is currently in the procurement stage working with three short-listed Design-Build Consortiums. A contract will be signed with the successful consortium to build the project starting mid-2015.

# PROJECT TIMELINE

4



# DESIGN-BUILD PROJECT COMPONENTS & FUTURE PLANS

5

The following boards present the details of the various components of the design-build project & conceptual future plans.

## CURRENT DESIGN-BUILD PROJECT

- » New interchange at PTH 59N and PTH 101 and realignment of PTH 101 in the vicinity of the interchange.
- » An upgraded intersection at PTH 59N and PR 202 with a traffic signal and additional turning lanes, which allows for a future interchange.
- » Six lanes on PTH 59N between PTH 101 and PR 202 and allow for six lanes on PTH 101 in the future.
- » Through-Pass Crossing of PTH 101 at Raleigh/Gateway Street corridor that accommodates an AT path and separate emergency vehicle crossing.
- » Closure of accesses along PTH 101 and PTH 59N and hard surfacing of selected service roads.
- » Redirect Knowles Avenue traffic to the extension of Headmaster Row.

## CONCEPTUAL FUTURE PLANS (not part of current design-build project)

- » Allow for future realignment of Wenzel Street and interchange at PR 202 and PTH 59N.
- » Allow for future PTH 101 and PR 204 (Henderson Highway) interchange modifications.





# DESIGN-BUILD PROJECT COMPONENT

## NEW INTERCHANGE AT PTH 59N & PTH 101

6



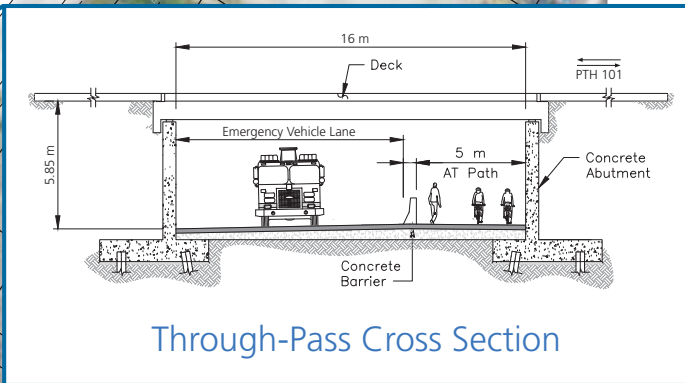
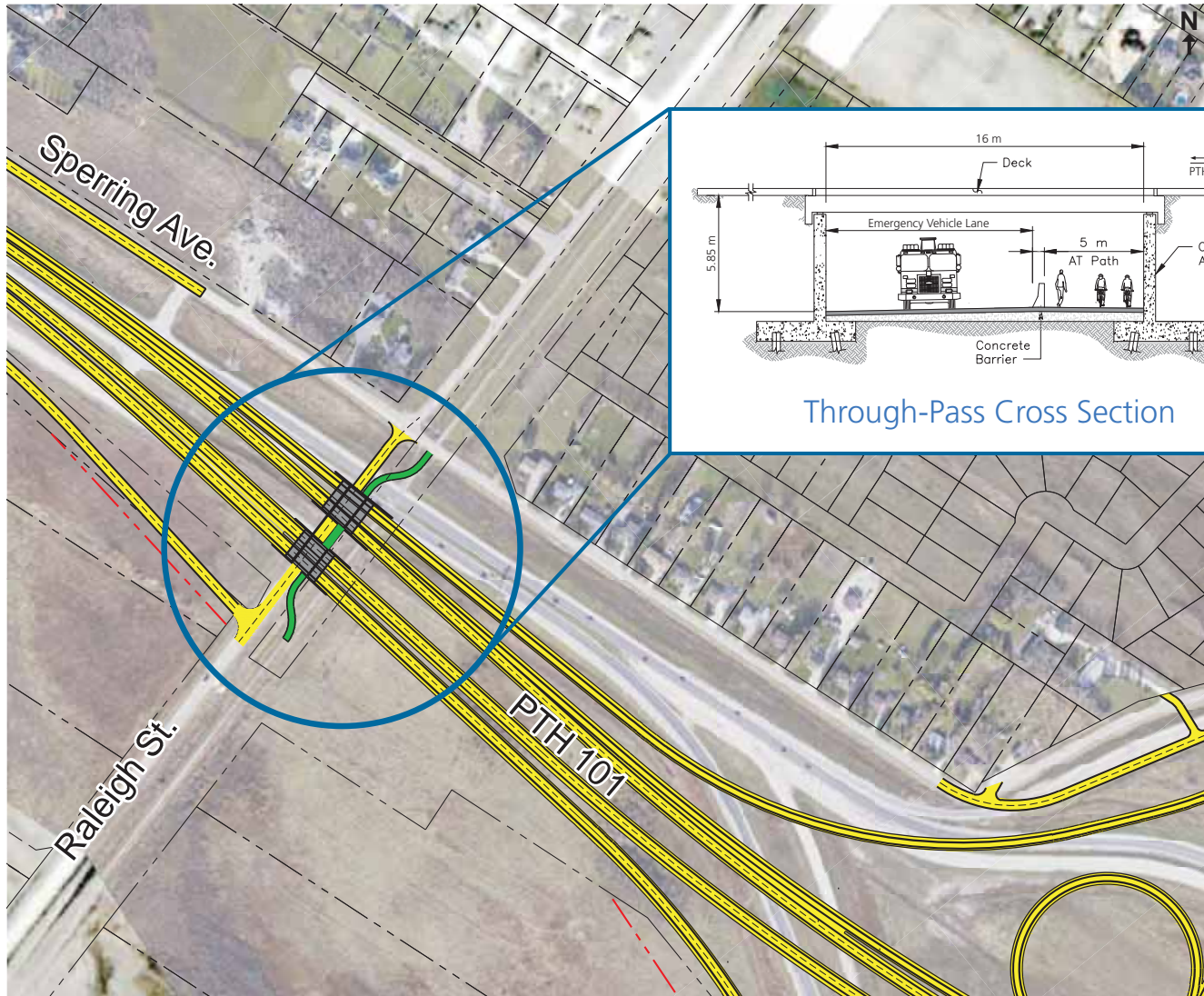
- » The interchange will accommodate future traffic by allowing the free flow of vehicles on both PTH 59N and PTH 101.



# DESIGN-BUILD PROJECT COMPONENT

## THROUGH-PASS CROSSING PTH 101

7



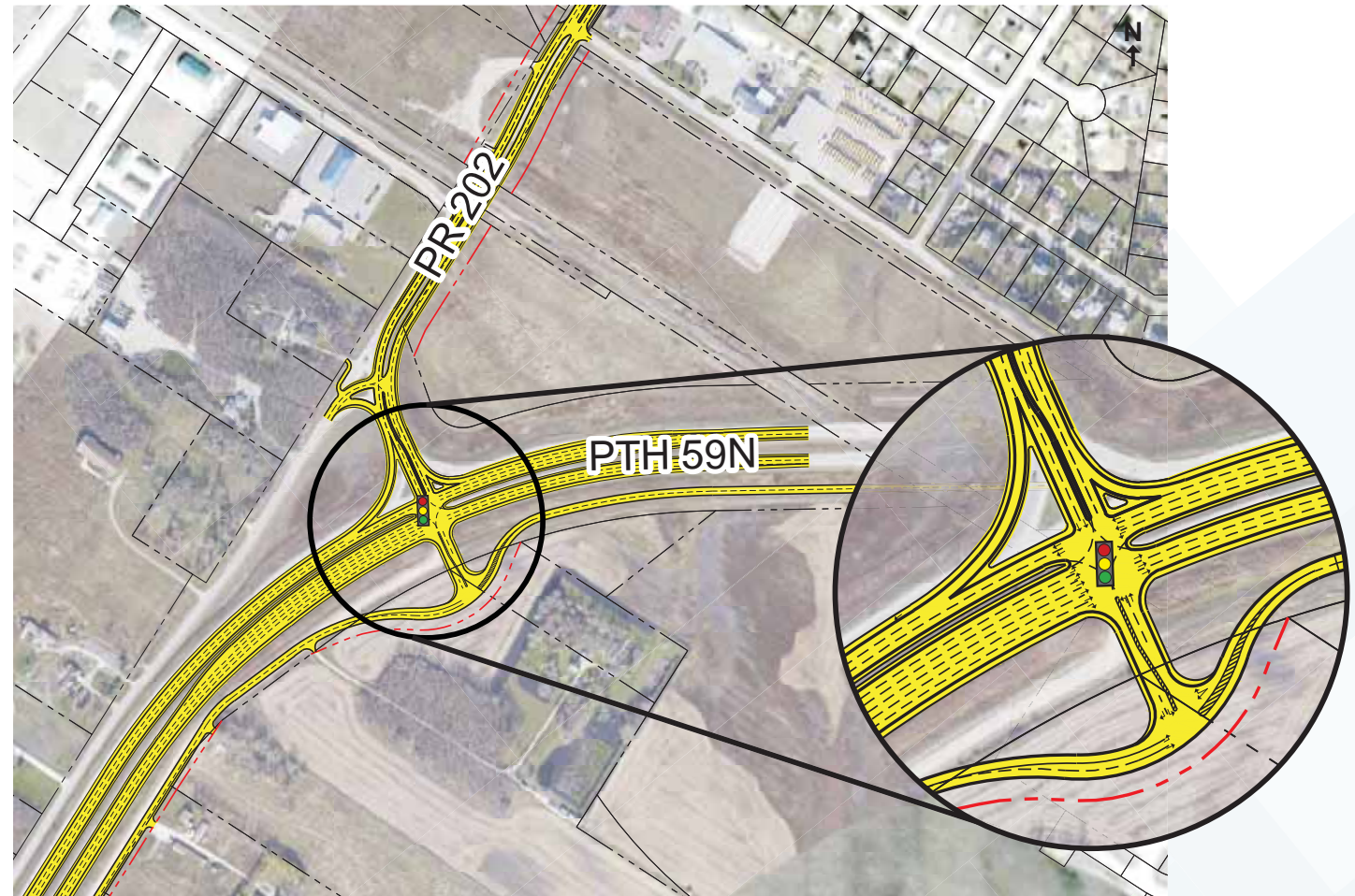
- » A through-pass will be constructed where PTH 101 is elevated above grade. The through-pass will include space for an AT pathway and emergency vehicles.

# DESIGN-BUILD PROJECT COMPONENT

## PTH 59N & PR 202

8

- » The addition of traffic lights and additional turning lanes at the intersection of PTH 59N and PR 202 will improve traffic flow and safety at the intersection.

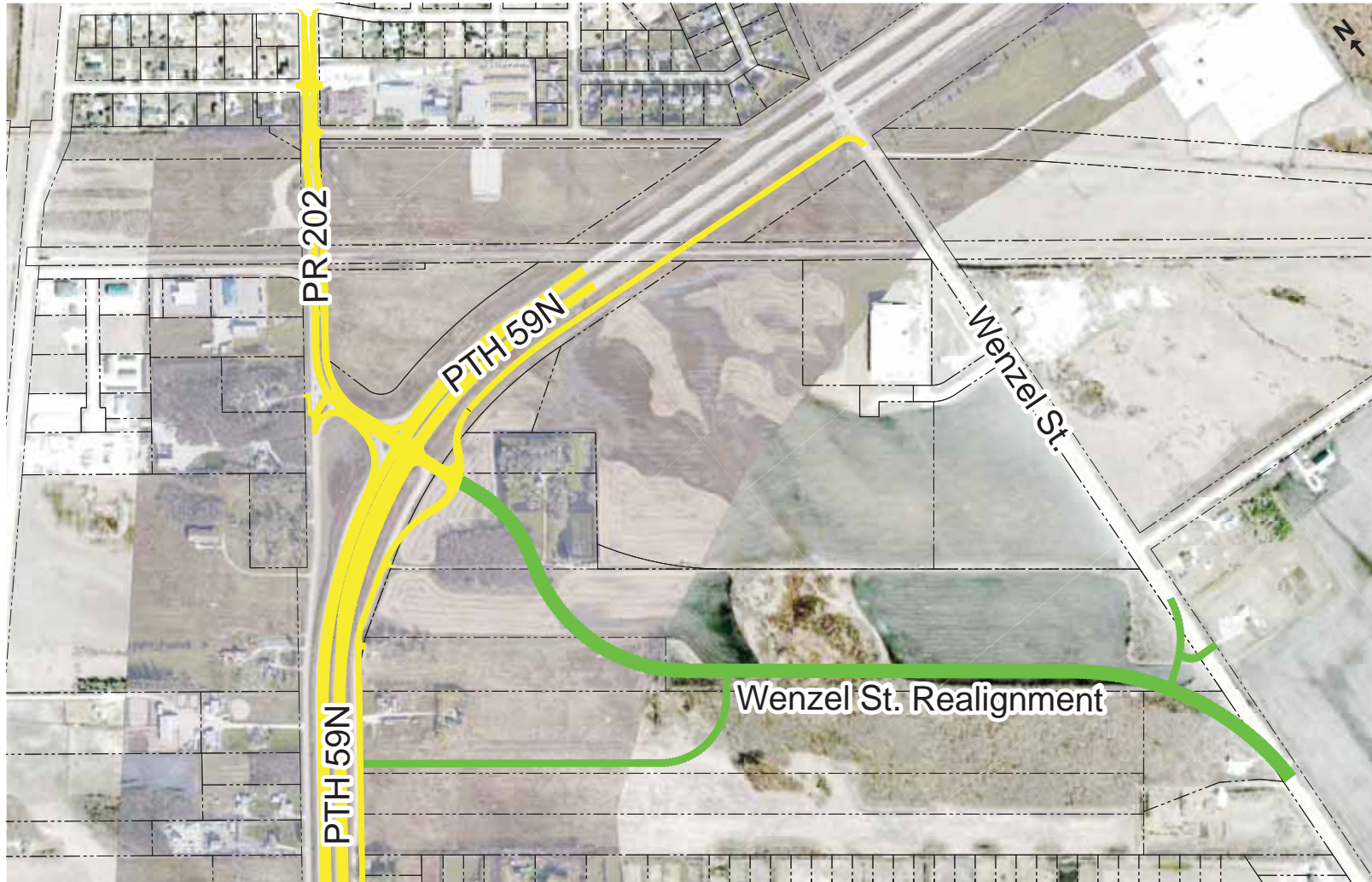




# CONCEPTUAL FUTURE PLAN

## PTH 59N & PR 202 - INTERIM

9

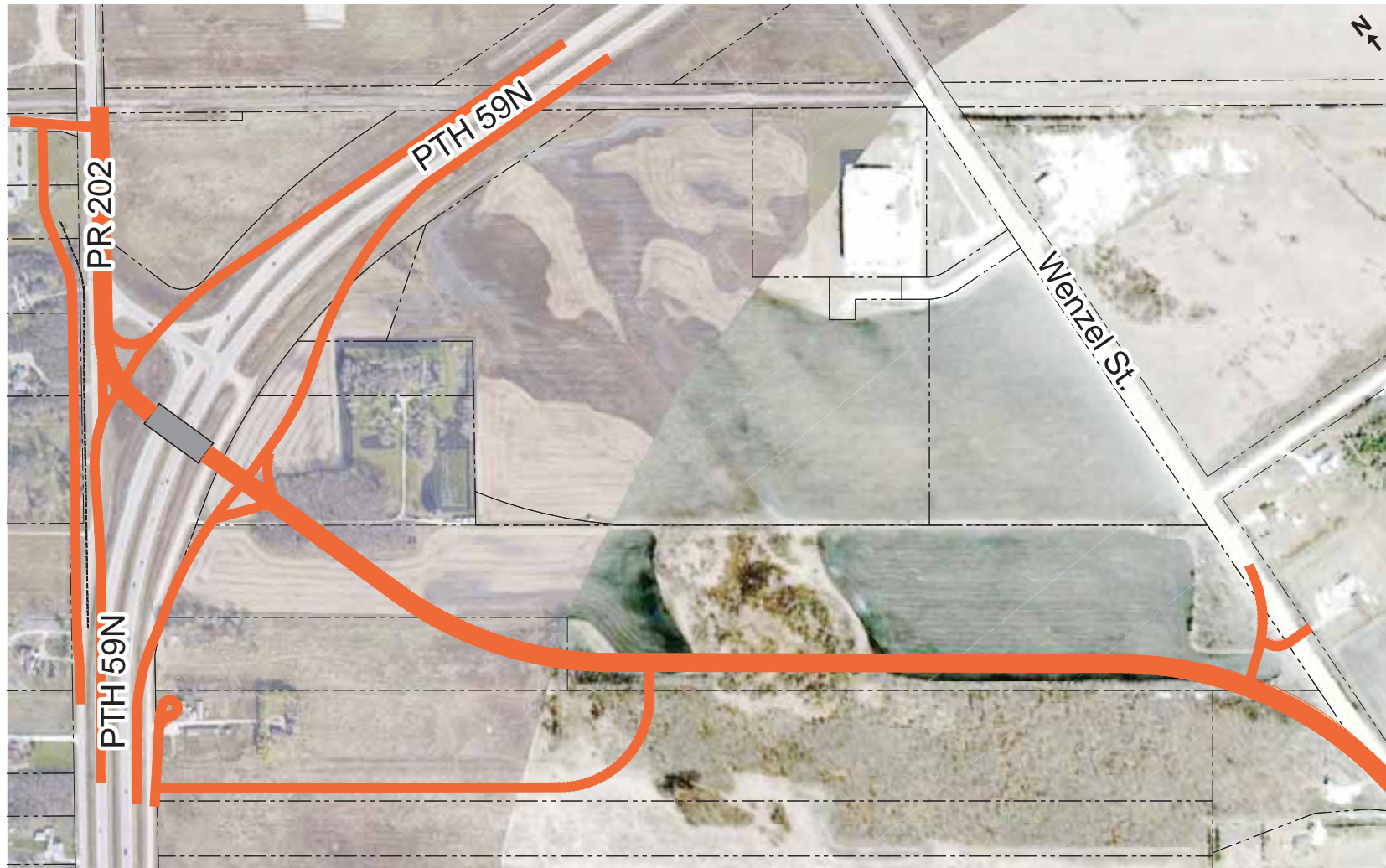


- » A conceptual realignment of Wenzel St. is an interim plan only, and not part of the current design-build project.

# CONCEPTUAL FUTURE PLAN

## PTH 59N & PR 202 - LONG TERM

10



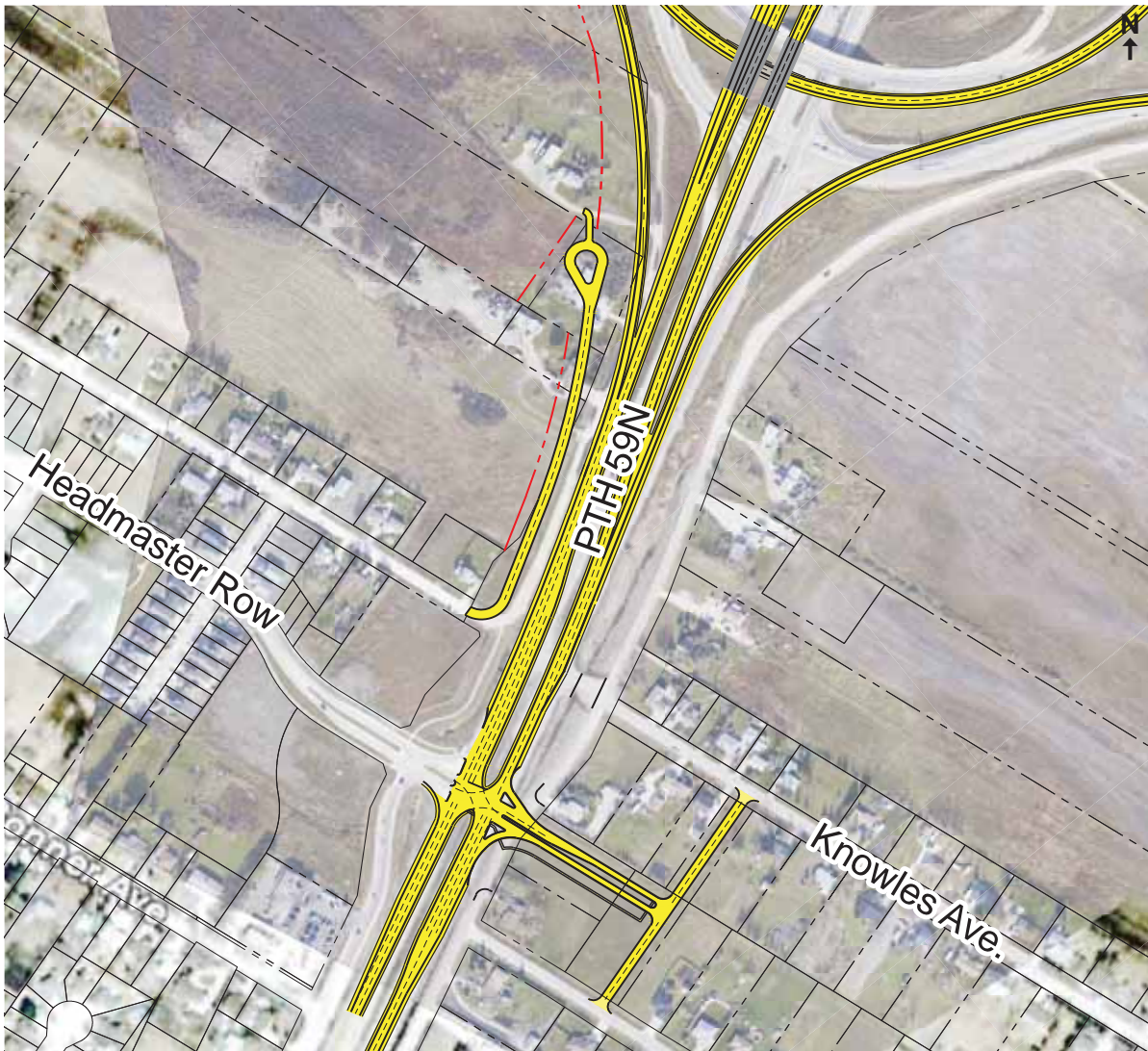
- » Conceptual future interchange plan only, and not part of the current design-build project.



# DESIGN-BUILD PROJECT COMPONENT

## KNOWLES AVE. & HEADMASTER ROW

11

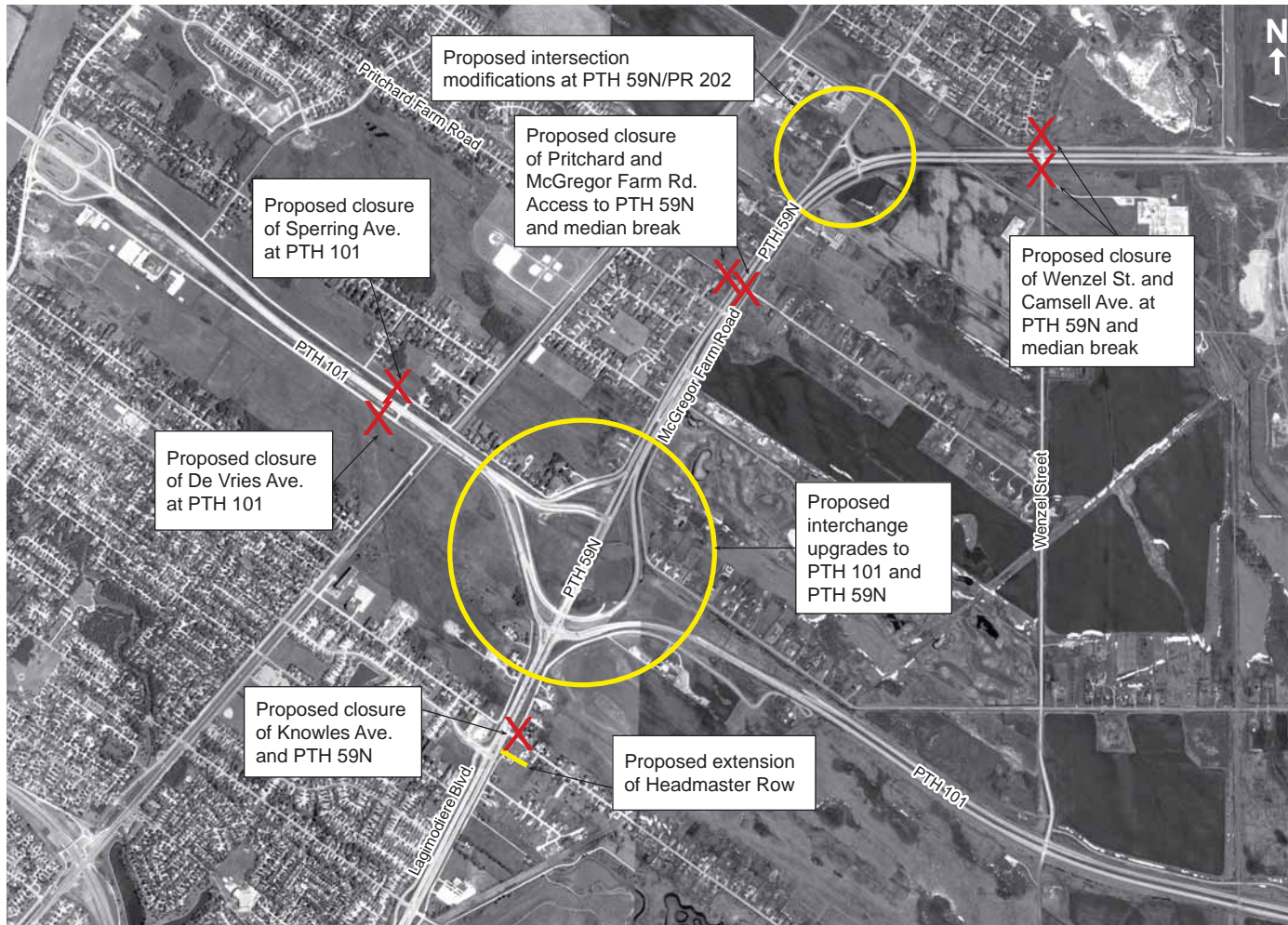


- » Traffic from Knowles Avenue will be redirected to Headmaster Row, which will be extended east to create a four legged signalized intersection with Lagimodiere Boulevard (PTH 59N).



# DESIGN-BUILD PROJECT COMPONENT ACCESS CLOSURES & SERVICE ROAD UPGRADES

12



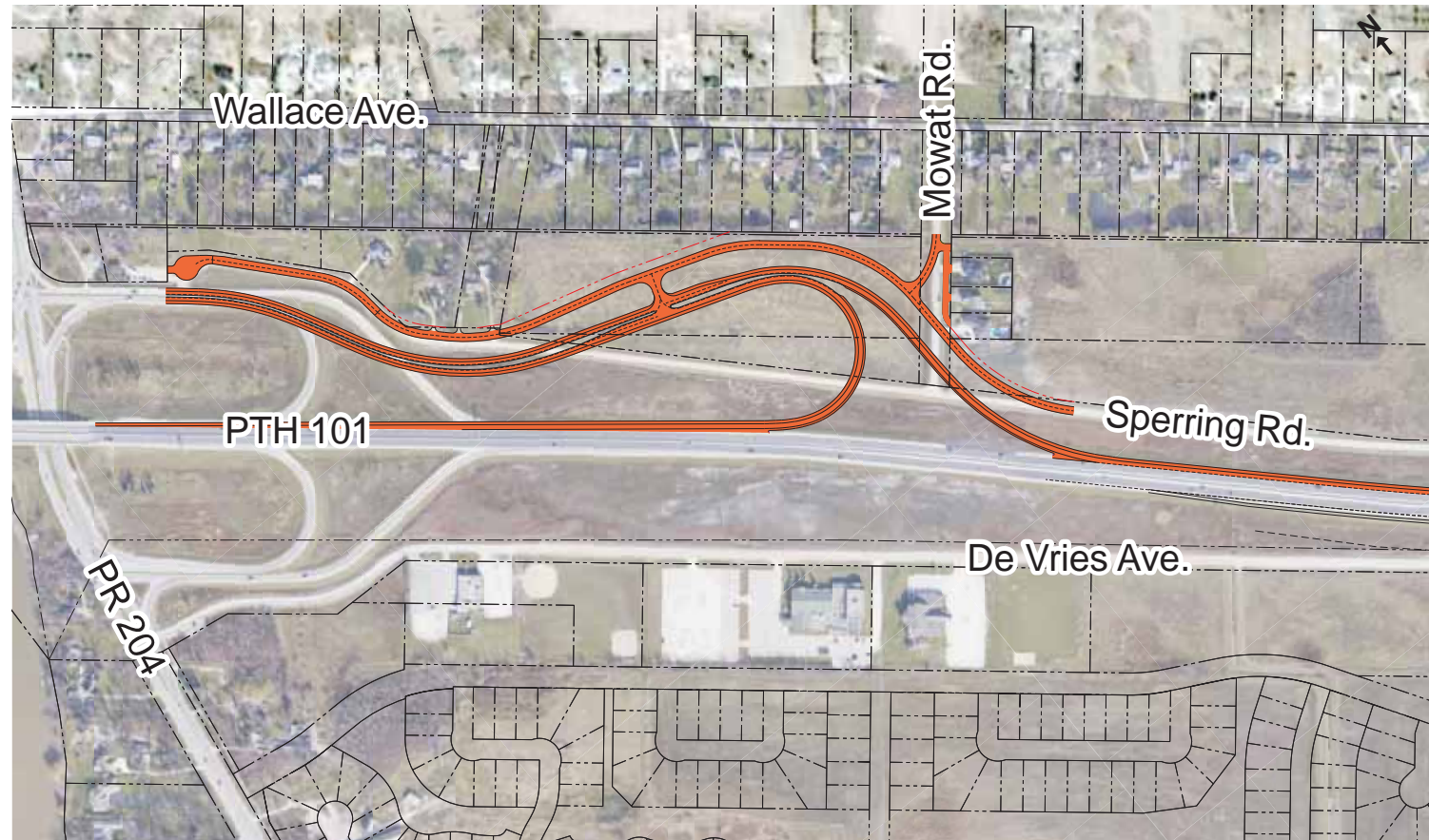
- » A number of access closures on PTH 59N and PTH 101 are planned as part of the interchange project. As part of the access closures, selected services roads will be hard surfaced.
- » The Camsell Ave. / PTH 59N access will be replaced with an emergency vehicle only access.

# CONCEPTUAL FUTURE PLAN

## PTH 101 & PR 204

13

- » Conceptual future PTH 101 and PR 204 interchange modifications to replace the Raleigh/Gateway – PTH 101 connection. **Not part of current design-build project.**
- » MIT intends to add the PTH 101 & PR 204 improvements as shown on the north side of PTH 101, to its five year capital plan.
- » Proposed configuration will allow access between Sperring Road / Mowat Rd. and westbound PTH 101 lanes.





# NEXT STEPS

14

- » Successful Design Build Consortium awarded contract.
- » Construction starts summer 2015.
- » MIT intends to initiate detailed design and acquire property to accommodate the PR 204 interchange modifications on the north side of PTH 101.



# THANK YOU

15

Thank you for attending. Please fill out and submit a comment form before you leave.

For more information contact:

Bruce Schmidt, CAO R.M. of East St. Paul

Email: [administration.department@eaststpaul.com](mailto:administration.department@eaststpaul.com)

Phone: 204-668-8112

Website

[www.eaststpaul.com](http://www.eaststpaul.com)